



# THE MOLE GUESTHOUSE

## SWAKOPMUND- NAMIBIA



# CATALOG

Embark on an Unforgettable Summer Vacation

A Destination That is Perennially Inviting

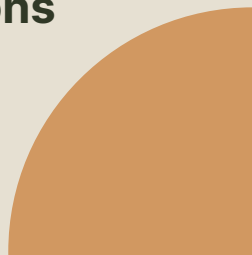
The Mole Guesthouse B&B offers a welcoming atmosphere for travelers of all budgets. With a steadfast commitment to delivering exceptional customer service, we take pride in providing a nourishing breakfast to kickstart your day.

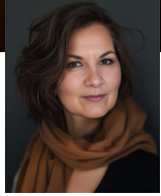
[www.themoleguesthouse.com](http://www.themoleguesthouse.com)



# Table of Contents

- 01** Letter From The Editor
- 02** The Best Facilities
- 03** The Ultimate Breakfast
- 04** Laundry Service
- 05** Tour and Excursions
- 06** Restaurants & Markets
- 07** Trip planning
- 08** Terms and Conditions
- 09** Contact Us





## Letter From The Manager

### Coastal Escapades!

Greetings! The Mole Guesthouse in Swakopmund is excited to present an informative catalog for your enjoyment.

2025's catalog highlights the top facilities and services available to our guests.

Swakopmund isn't just a pretty face on the Skeleton Coast; it's like the adventure capital of Namibia!

With nearly a thousand miles of coastline, you'd think Namibia would be the star of those fancy beach brochures, but nope!

This beach is like a desert diva, with the Namib Desert strutting right alongside the ocean. What really sets this coastline apart is its sunsets and spine-tingling history—think shipwrecks galore and tales of brave souls lost to the treacherous currents and sneaky sea fog.

In addition, the area is largely deserted, which enhances the sense of mystery!

**We trust that this catalog will prove to be immensely helpful for you. Looking forward to seeing you soon!**

*D. Louw*

# The Best Facilities

**Our 22 cozy bedrooms are like a warm hug from your favorite blanket, decked out in charming traditional decor and packed with everything you need for the ultimate chill-out session!**



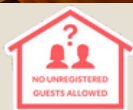
## Family Rooms

The Family Rooms feature a cozy one-room suite equipped with a queen-size bed and a bunk bed suitable for children aged 0-12.

Situated on the ground floor, it includes a relaxing outdoor seating area.

Amenities such as a 42-inch flat screen TV, fridge, microwave, coffee, tea, and essential supplies are provided.

Additionally, the spacious bathroom boasts a 60-inch shower.



## Sharing Twin Room

The double/twin rooms are equipped with two three-quarter beds and include an en-suite bathroom, a luggage rack, built-in cupboards, linens, bath towels, and complimentary Wi-Fi.

Guests can enjoy a 42-inch flat-screen TV, along with coffee, tea, and various amenities.

Garden Twin rooms also feature a fridge, microwave, and a workspace desk.



## Double Room

The Double Rooms are equipped with a cozy double bed, an en-suite bathroom,

a luggage rack, cupboards, linens, bath towels, and complimentary Wi-Fi.

Guests will also find coffee, tea, and various amenities provided.

The Garden Double Rooms feature a 42-inch flat-screen TV, a fridge, and a working desk.



## Luxury Suite

Indulge in comfort after a long day in our one-room suite featuring a queen-size bed, conveniently located on the ground floor with access to a cozy outdoor garden area. The spacious bathroom includes a 60-inch shower (no bathtub). Additional amenities include a 42-inch flat-screen TV, refrigerator, microwave, coffee and tea supplies, as well as an open plan kitchenette for your convenience.



# The Ultimate Breakfast

A delightful breakfast with a variety of choices is an excellent way for guests to kick off their day. We offer a continental breakfast featuring freshly baked croissants and bread rolls, accompanied by a selection of spreads such as butter, jellies, jams, and marmalade. Our buffet includes cheese, cold meats, fresh fruit, yogurt, and cereal.

all paired with a cup of freshly brewed coffee or tea.

Additional beverages are available as well.

For those who prefer a hot option, you can order bacon and eggs (scrambled or fried) or an omelet, served with a refreshing green salad.

There's always a sweet treat to enjoy, ensuring you have enough energy for an adrenaline-filled day packed with activities in and around Swakopmund.





# Laundry Service

With our laundry and cleaning service, you can relax and watch your worries disappear while you indulge in a shopping spree or enjoy various activities in and around Swakopmund!

You leave it, we clean it!



# These epic desert adventures flaunt the jaw-dropping beauty of Namibia's Namib Desert...



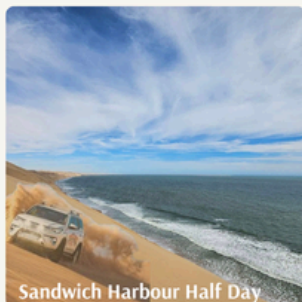
Peacefully glide above the desert in a hot air balloon

As the sun wakes up and warms the horizon, picture yourself floating serenely in a hot air balloon above an ancient desert landscape, timeless beautiful.



Living Dunes Experience

At first glance, the dunes of the Namib Desert between Walvis Bay and Swakopmund may seem impressive yet somewhat barren. However, one would be amazed by the diversity and abundance of species in this ecosystem when viewed through the lens of a true Namibian expert.



Sandwich Harbour Half Day

Sandwich Harbour, nestled in Namib Naukluft Park, is like a whimsical wonderland where a sand dune shares a secret rendezvous with the sea.



## Boat cruises

are the ultimate VIP pass for marine life watching! Get ready to rub elbows with a rowdy seal colony at Pelican Point—those cheeky seals love to hitch a ride on your boat! And if you're looking for some splashy fun, dive into a sea of water sports galore! You can even show off your waterskiing skills at the lagoon while those southwesterly winds are basically begging you to kitesurf your heart out!

## Tour and excursions

**Swakopmund, Namibia's delightful coastal treasure!**

It feels like a refreshing burst of ocean air in the heart of a desert heatwave.

As Namibia's largest beach town, it serves as the ideal launching point for a thrilling range of adventures! However, don't expect a typical sun-drenched getaway. Mornings may have you reaching for a sweater as sea mist rolls in, the result of desert sands meeting the chilly

Atlantic waters, creating an enchanting fog.

Nonetheless, those soft sandy shores radiate that enchanting summer holiday atmosphere!

If you're curious about the best time to visit, the warmest months for enjoying the sun are typically December, January, February, and March, with the festivities really ramping up in September when peak season begins!

The Skeleton Coast is both breathtaking and barren, ranking among the most inhospitable areas on Earth. Cold ocean currents support a rich diversity of marine life, yet the waters are unsuitable for swimming. Water temperatures rarely rise above 19 degrees Celsius, and turbulent waves are frequent. This region is characterized by expansive dunes and holds the title of the driest place in sub-Saharan Africa. Nevertheless, these stark and remote landscapes draw visitors globally, and for good reason; they boast a fascinating history and a distinctive beauty. This importance has led to its designation as part of the Namib-Skeleton Coast National Park.

**Discover the enchanting must-see sights and exhilarating activities:**

Swakopmund Museum, Swakopmund Jetty, Extreme Sports, and Nature and Wildlife Tours.

For tailored recommendations, we are here to help.



# Restaurants & Markets

The coastal town of Swakopmund attracts both local and international tourists.

**The Mole Guesthouse**, ideally located just a short walk from both the beach and the town center, provides easy access to a variety of shops and restaurants. Immerse yourself in stunning landscapes, vibrant traditional cultures, and delicious coastal cuisine.

As the sun sets, a captivating new world emerges in the night sky over the Namib Desert. Namibia's mesmerizing celestial beauty has earned global acclaim, making it a paradise for stargazing enthusiasts and experienced astronomers alike.

Furthermore, the area is bustling with numerous dining and drinking establishments, adding to the charm of this delightful vacation spot.

Here's a sneak peek of what awaits you...

## Village Café

Loved by locals and tourists alike for its quirky character and good service

## Cafe Anton

If you're in search of the quintessential Swakop experience, Café Anton is the place to be.

Often regarded as one of the town's most famous coffee destinations, it has a timeless charm. Visit for a traditional beer and lunch, or indulge in some delightful coffee and cake.

## Brauhaus

Adorned in classic Bavarian style, complete with memorabilia and flags from around the globe, you may momentarily forget that you are situated in the heart of one of the world's most famous deserts, the Namib.

## Altstadt Restaurant

## Brewer & Butcher

## Ocean Cellar

## BlueGrass

## Jetty 1905

## The Tug

## Kücki's Pub

## The Wreck

## Fork 'n Nice

## Kavita Craft Market

The African street market is near the beachfront and the lighthouse. There are many sellers with batiks, wooden bowls, clothing, figurines, masks, soapstone



We have gathered the finest options in Swakopmund – explore our top selections for the “must-experience” restaurants



## Airport Pick-ups



*We arrange  
pick-up for  
you*

## Trip planning

Don't let the tedium of trip planning steal the joy from your vacation. Allow The Mole Team to take care of the boring details; we'll handle all your restaurant and activity reservations

for your getaway.

Our philosophy is simple: book with us, and you can stop planning and start exploring!

## Dolphin Cruise & Kayaking



## Skydiving



## Spitskoppe Day Trip



## Living Desert Tours



## Living Desert



## Ballooning



## Sandwich Harbour



# Terms and Conditions

Dear Guest,

We want you to enjoy your time with us, but we are implementing safety measures to ensure your well-being. We kindly ask that you adhere to our rules and regulations. Please know that we are committed to keeping both you and our staff safe!

## **Terms and Conditions for THE MOLE GUESTHOUSE CC**

### **Booking Notices**

Maximum 2 people per Twin/Double Room.

**NO UN REGISTERD GUEST ALLOWED IN ROOMS  
VISITORS MUST REGISTER AT FRONT DESK –  
ONLY VISITS OUTSIDE IN THE GARDEN AREA  
AND BE OFF THE PREMISES AT 19H00.**

### **Payment Terms**

Please note: The Guesthouse “First Pay then Stay” Payment Policy

Confirm bookings to secure your stay with us.

Full payment is due on receipt of proforma invoice/confirmed confirmation,  
Payment can be made by electronic bank transfer (EFT) Bank information on  
the bottom of your confirmation, please email proof of payment to:  
reservations@themoleguesthouse.com.

Bank charges are not included in the rates and are for your account.

### **Cancellation fees will be incurred as follows:**

31 days and more prior to arrival: 0%

30-21 days prior to arrival date: 50%

20-8 days prior to arrival date: 75%

7- 0 days before arrival 100% of total booking value

100% of total booking value for non-arrival or no show

No cancellation fees will be waived after notice period has lapsed.

**PLEASE NOTE:**

**NO CASH REFUNDS**

Rates are subject to availability, currency fluctuations, seasonality & website updates.

All information is subject to change without notice. Terms & conditions apply.

# THE MOLE GUESTHOUSE SWAKOPMUND - NAMIBIA

## Contact Us



+264 811460999

+264 64 460999



reservations@themoleguesthouse.com



www.themoleguesthouse.com



Werft/Strand str 6 - Swakopmund

