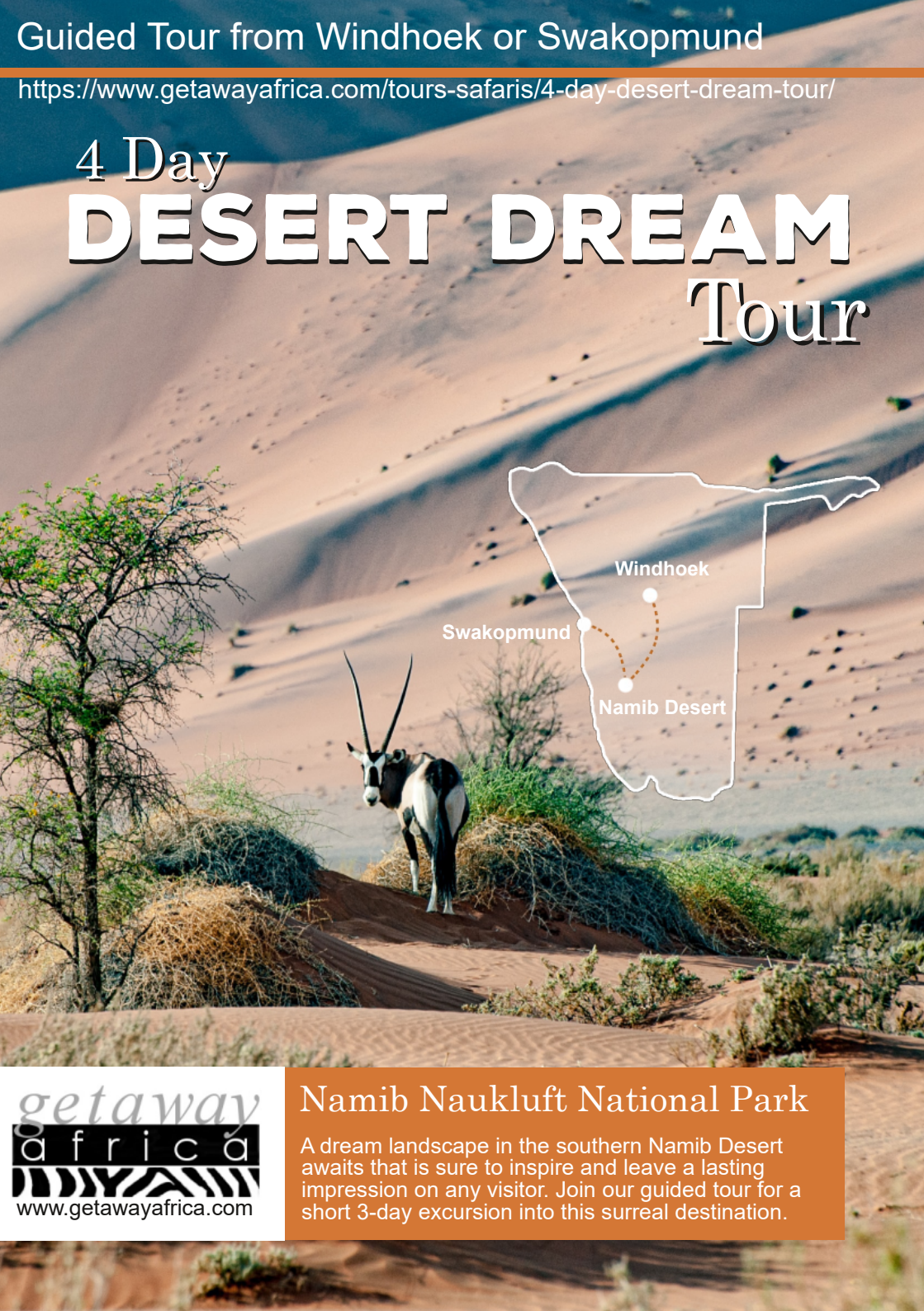


Guided Tour from Windhoek or Swakopmund

<https://www.getawayafrica.com/tours-safaris/4-day-desert-dream-tour/>

4 Day DESERT DREAM Tour



getaway
africa

www.getawayafrica.com

Namib Naukluft National Park

A dream landscape in the southern Namib Desert awaits that is sure to inspire and leave a lasting impression on any visitor. Join our guided tour for a short 3-day excursion into this surreal destination.

4 DAY DESERT DREAM TOUR

DAY 1 DEPART WINDHOEK OR SWAKOPMUND

Departing Windhoek just before 14h00 (or 13h00 in winter), passing the Kupferberg Pass, we drive along cattle farmland and see a few farmhouses along the way. As we continue, the vegetation changes and the farmland is used for sheep and goat farming. We travel along the Spreetshoogte Pass and enjoy undisturbed views from the top of one of Namibia's steepest passes.

Departing Swakopmund (or Walvis Bay) just before 14h00, passing the harbour town of Walvis Bay, we continue through the Namib Naukluft Park, the largest conservation area in Africa, and pass the Vogelfederberg, Kuiseb Pass and Gaub Pass.

We stop at the small settlement of Solitaire before reaching the lodge located in the NamNau Habitat private nature reserve, which hosts a wide variety of desert-adapted game including springbok, ostrich, earth wolf, bat-eared fox and many more species.

Dinner

DAY 2 NAMIB DESERT & MARBLE MOUNTAIN SUNDOWNER

An early morning rise with snacks and coffee enables you to arrive at Sesriem gate around sunrise, traversing the Tsauchab dry riverbed, which has found a way through the dunes until it reaches the clay pan - Sossusvlei. The early morning sun offers spectacular pastel colors in the star-shaped dunes.

Your first stop will be at Dune 45. Climb one of the dunes and you might be overwhelmed by the sight of the dynamic and living desert!

Enjoy a picnic breakfast under a shady camelthorn tree, before we continue to the 'Dead Vlei'. We also visit the Sesriem Canyon, a 30-metre deep rift, for a leisurely walk, before we return to our accommodation for a late lunch.

During the late afternoon, we enjoy a sundowner drive to the natural marble mountains on the 25,000 ha private nature reserve. Along the way, you might spot some of the reserve's game including the treasured Oryx.

Picnic Breakfast, Lunch and Dinner

DAY 3 NAMNAU NATURE WALK & MORINGA FOREST DRIVE

We depart around 07h00 for a 1.5 to 2 hour guided walk in the Naukluft Mountains.

Upon return, enjoy breakfast with the rest of your morning at leisure to relax at the pool side with great views over the plains. Lunch is served at the lodge.

During the afternoon you will do an extensive desert drive in the undisturbed natural reserve. We cross the Tsondab and visit the Moringa Forest - a hidden treasure - until we get to a spot where you can feel the solitude of the Namib; a 360 degree view! Take in the breathtaking scenery before we return to the lodge along a scenic route, where (depending on the season) herds of springbok and oryx can be seen.

Breakfast, Lunch and Dinner

DAY 4 RETURN TO WINDHOEK OR SWAKOPMUND

Returning to Windhoek we depart the lodge around 09h00 (or 08h00 in winter) via the Remhoogte Pass, which boasts a variety of vegetation. We arrive in Windhoek city around 12h30.

Returning to Swakopmund we depart the lodge around 09h00 (or 08h00 in winter) via the Gaub & Kuiseb Pass. We arrive in Swakopmund around 12h30.

Breakfast

HIGHLIGHTS

- Endless sand dunes of the Namib Desert
- Option to climb Dune 45 (or possibly Big Daddy)
- Sundowner drive to Marble Mountains
- Leisure time at Dead Vlei and Sesriem Canyon
- Nature Walk and Moringa Forest Drive

GROUP SIZE

Small Group (large groups on request)

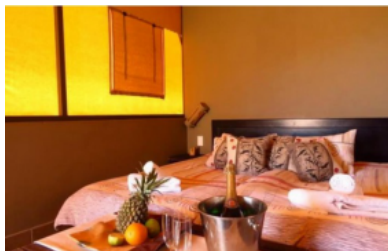
DEPARTURES

Daily Departures

Contact Getaway Africa's experienced travel experts to book your Namibia Tour
Email enquiries@getawayafrica.com • Phone (+27) 21 982 6164

STANDARD TOUR

Soft Adventure Camp



Designed for the nature loving visitor who wants to experience the undisturbed Namib Desert. The Soft Adventure Camp is located on open plains with granite hills as a backdrop. It has a beautiful view onto the open plains with a nearby borehole, where springbuck and oryx often come to drink.



SUPERIOR TOUR

Namib Naukluft Lodge

Backed by impressive granite hills with striking views over the open desert plains, the lodge consists of 16 spacious en-suite rooms that are tastefully furnished. Delicious traditional meals are served on the veranda or prepared by the chef on the open fire in the lapa, enhancing the feeling of a very special desert evening.



DESERT DREAM TOUR RATES

STANDARD TOUR Soft Adventure Camp

TOUR RATES (Windhoek to Windhoek)		
	Sharing	Single *Single Policy Applies
01 Nov'24 - 31 Mar'25	R 13,495 per person sharing	R 15,145 per person
01 Apr'25 - 31 Mar'26	R 14,840 per person sharing	R 16,490 per person
01 Apr'26 - 31 Oct'26	R 16,035 per person sharing	R 17,815 per person

SUPERIOR TOUR Namib Naukluft Lodge

TOUR RATES (Windhoek to Windhoek)		
	Sharing	Single *Single Policy Applies
01 Nov'24 - 31 Mar'25	R 14,595 per person sharing	R 16,240 per person
01 Apr'25 - 31 Mar'26	R 16,050 per person sharing	R 17,700 per person
01 Apr'26 - 31 Oct'26	R 17,340 per person sharing	R 19,265 per person

ALL RATES ARE PER PERSON IN SOUTH AFRICAN RAND



TOURS FROM SWAKOPMUND OR WALVISBAY AIRPORT - R 1,000 pp surcharge

All rates indicated above are for tours starting and ending in Windhoek, however, this tour can also depart/return from Swakopmund or Walvis Bay Airport. A R 1,000 surcharge per person applies for transport to/from Swakopmund. This includes charges for both ways or Windhoek/Swakopmund or Swakopmund/Windhoek.

SINGLE TRAVELLER POLICY

A minimum of 2 travellers is required to confirm a tour.

Bookings for single travellers will be accepted 2 months in advance or if a tour is already confirmed to depart. Getaway Africa will inform the client if he/she is the only person booked. Once more clients join the tour, the client will be informed and the tour will be re-confirmed.

However, should the client remain the only traveller on the specific date at 2 weeks prior to departure, the client has the option to cancel the tour or pay a surcharge for transport as a single occupant (Windhoek - R 1,500 per way / Swakopmund - R 2,000 per way)

CHILD POLICY Children welcome - Please contact us for child rates.

INCLUDED

- English Speaking driver/guide
- Transport in air-conditioned vehicle
- 3 Nights' accommodation
- Daily Breakfast & Dinner plus one Lunch
- All excursions as per itinerary
- Porterage
- Still and sparkling water on-board vehicle

EXCLUDED

- Pickup Windhoek Airport (extra R 500 pp/way)
- Visas
- Tips & curios
- Laundry
- Travel Insurance (Highly Recommended)
- Items of personal nature

Contact Getaway Africa's experienced travel experts to book your Namibia Tour
Email enquiries@getawayafrica.com • Phone (+27) 21 982 6164